

FLOOR PLAN
ENTRY ELEVATION FACING PARKING

EXTERIOR FINISH SCHEDULE

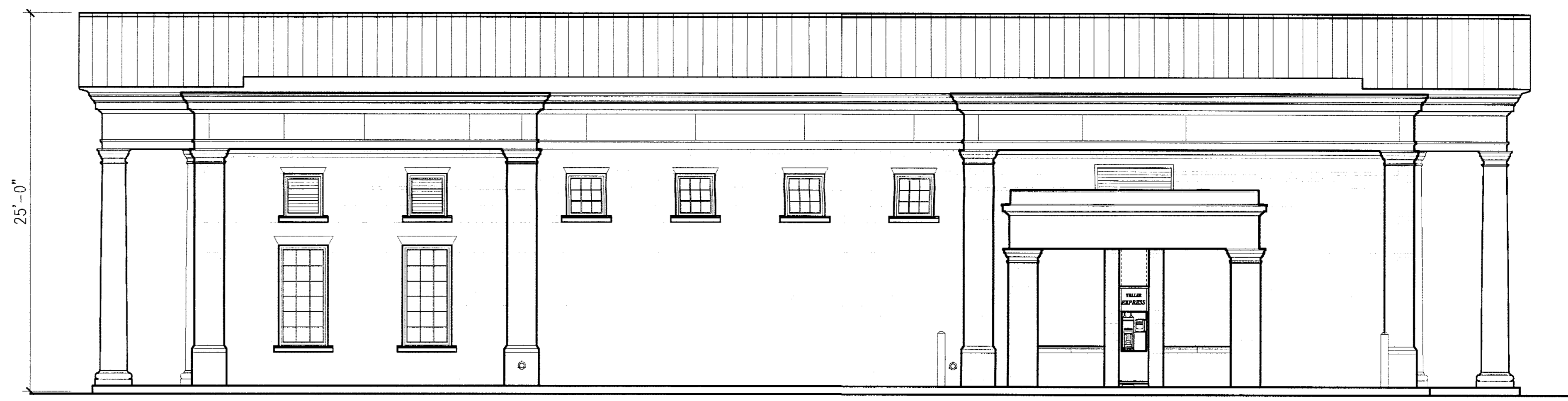
<p>BRICK: CUSHWA CALVERT #104 MODULAR FACE BRICK. MORTAR COLOR TO MATCH GLEN GERY "PORTLAND CEMENT / LIME BLEND.</p> <p>METAL ROOF: STANDING SEAM METAL ROOF, GUTTERS, DOWNSPOUTS AND EXPOSED FLASHING TO MATCH PAC-CLAD "MUSKET GREY"</p> <p>ENTABLATURE AND PEDIMENTS: E.I.F.S TO MATCH DRYVIT "INDIANA LIMESTONE" #DS10622. PREFINISHED METAL COPING AT E.I.F.S. TO MATCH COLOR OF E.I.F.S.</p> <p>PORTICO COLUMNS: TUSCAN STLYE, ROUND WOOD COLUMNS, UNFLUTED (22" DIA. AT BASE) PAINTED TO MATCH E.I.F.S.</p>	<p>WINDOWS: ALUMINUM CLAD, WHITE, SINGLE HUNG (FIXED)</p> <p>PRECAST CONCRETE: WINDOW SILLS AND HEADS, DOOR HEADS (NOT AT ENTRANCE), AND ACCENT AT BASES OF BRICK PILASTERS TO BE PRECAST TO MATCH COLOR OF E.I.F.S.</p> <p>EXTERIOR WOODWORK: PILASTER AND PEDIMENT SURROUNDS AT ENTRY AND EGRESS DOORS PAINTED SEMI-GLOSS WHITE TO MATCH CLAD WINDOWS.</p> <p>ENTRY DOORS: ENTRY DOORS AND TRANSOM NATURAL CHERRY WITH CLEAR FINISH.</p> <p>SIGNAGE: 18" HIGH INDIVIDUALLY MOUNTED, INTERNALLY ILLUMINATED CHANNEL LETTERS. PLEXIGLAS FACE- RED WITH 434U TRIMCAP. LETTER BODY - ALUMINUM, PAINTED BLACK.</p>
--	--



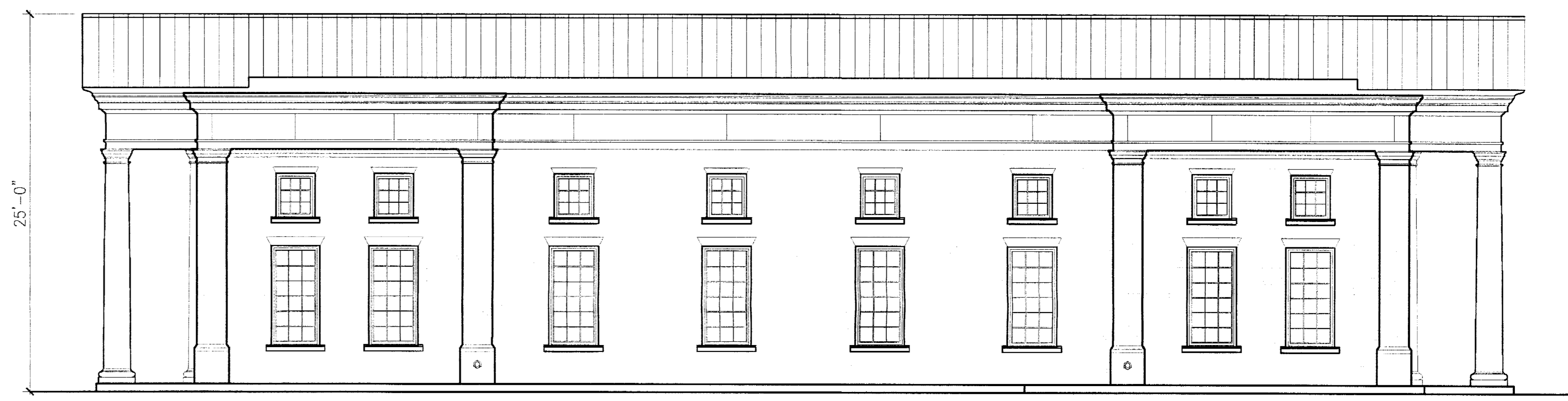
ENTRY ELEVATION FACING PARKING



ENTRY ELEVATION FACING ROUTE 108



DRIVE-THRU ELEVATION



PARKING SIDE ELEVATION

DEVELOPER'S CERTIFICATE

The Undersigned agrees to execute all the features of the Site Plan Approval No. _____, including Approval Conditions, Development Program, and Certified Site Plan.

Developer's Name: _____ Company _____ Contact Person _____

Address: _____

Phone: _____

Signature: _____

M-NCPPC APPROVAL STAMP

RECEIVED
NOV 1 2007

Certified Site Plan
File No. _____
Montgomery County Planning Board

Chair or Designee _____ Date _____

MONTGOMERY COUNTY PLANNING DEPARTMENT
THE MARYLAND-NATIONAL CAPITAL PARK AND PLANNING COMMISSION

ASHTON
12 Olney Sandy Spring Road
Ashton, MD 20861

LEO A DALY PLANNING ARCHITECTURE INTERIORS
EST. 1915
Tenth Floor Connecticut Ave NW Washington DC 20036 USA
Tel 202 861-4600 Fax 202 872-8530

SCALE

2" = 0' 2" = 4'	SCALE: 1/4" = 1'-0"
8" = 0' 8" = 16'	SCALE: 3/4" = 1'-0"
4" = 0' 4" = 8'	SCALE: 1 1/2" = 1'-0"
2" = 0' 2" = 4'	SCALE: 3" = 1'-0"

REVISIONS

NO.	DESCRIPTION	DATE

FILE LOG

ACTIVITY	REFERENCE	BY

REGISTRATION

JOB NUMBER: 051-10146-000
OCTOBER 30, 2007

